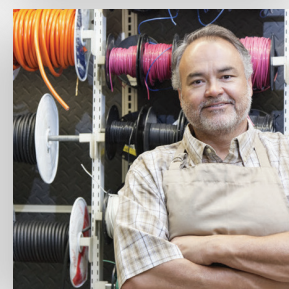
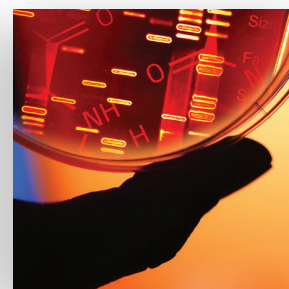
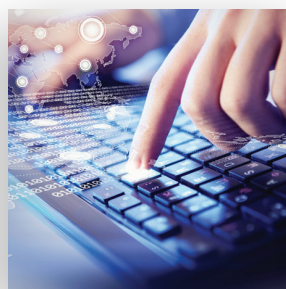
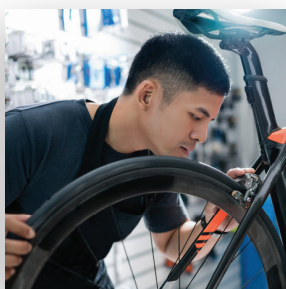


MARYLAND BUSINESS CLIMATE SURVEY 2021

Sponsorship Opportunities



mdbusinessclimate.org

A PROJECT OF



MEDIA PARTNER



PARTNER



MARYLAND BUSINESS CLIMATE SURVEY 2021

The Maryland Business Climate Survey, developed through the Maryland Public Policy Institute's Center for Business & Economic Competitiveness and in partnership with the top faculty members from the Jacob France Institute at the University of Baltimore, surveys 1,000 Maryland businesses to learn how policy decisions affect their growth and viability.

The Survey gathers clear data on how taxes, regulations, and labor costs affect Maryland's businesses each year and highlights the climate changes over time.

These influential findings inform state lawmakers, the Administration and top media outlets.

Why Invest?

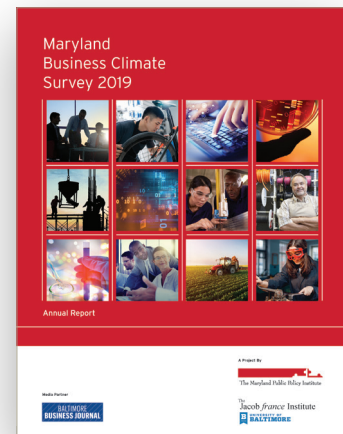
The Business Climate Survey is a critical tool for lawmakers and other decision-makers who seek to improve Maryland's business climate. Its release garners a high level of media coverage from the survey media partner Baltimore Business Journal, The Daily Record, and Site Selection magazine. According to the Baltimore Business Journal, articles about the Survey are among the most widely read on their website.

By becoming a sponsor, your company will:

- Become an economic steward of Maryland
- Demonstrate a dedication to addressing key issues impacting business and ultimately the entire state
- Have a voice in the future economic development of Maryland that impacts your employees and their families

Depending on your sponsorship level, your company may also:

- Meet with the Institute's senior management and thought leaders to discuss statewide issues and challenges in doing business
- Receive visibility, preferred access to events, and promotional opportunities as well as direct involvement in roundtable discussions on key economic issues.



A PROJECT OF

MEDIA PARTNER

PARTNER

SPONSORSHIP LEVELS and Benefits

SPONSORSHIP LEVEL	\$25,000	\$15,000	\$10,000	\$5,000	\$2,500	\$500
Customized state economic briefing of results for top management	■					
Invitation to business agenda conference calls with high level experts during 2021 session	■					
Included as a sponsor in media coverage of results	■					
Complimentary tickets to upcoming events, including the 2021 Maryland Policy Orientation	■					
Opportunity to introduce speakers and/or panelists	■	■				
Opportunity to sponsor 2021 events	■	■				
Invitation to four exclusive roundtable discussions with other decision-makers to discuss results and action plan pre-session						
Roundtables are focused on: <ul style="list-style-type: none"> ■ Tax Reform ■ Lessening Regulations ■ Expanding Economic Development Policy ■ Workforce Development 	■	■	■			
Inclusion of company's quote and photo within Business Climate Survey results packet; directed to over 32,000 Marylanders	■	■	■	■		
Exclusive email policy updates	■	■	■	■	■	
Company logo on Business Climate Survey website	■	■	■	■	■	■
Early access to results in print and digital formats	■	■	■	■	■	■

LEADING
PARTNER

PRESENTING
PARTNER

INFLUENCING
PARTNER

SUSTAINING
PARTNER

SUPPORTING
PARTNER

BASIC
PARTNER



*“Having a detailed analysis of the key issues impacting Maryland’s business community will provide insightful information into how we can best move our state’s economy forward. **This Survey will give us valuable feedback and help illuminate the areas where we need to improve,** which is critical to the Department of Commerce’s mission of attracting and retaining businesses, supporting job creation, and strengthening an economic climate where entrepreneurs and innovators can thrive.”*

Kelly M. Schulz

Maryland Secretary of Commerce

*“Senior level executives and decision makers are accustomed to making informed, data driven decisions. **The annual business climate survey allows both business leaders and policy makers the opportunity to hear firsthand from major employers their thoughts and concerns about Maryland as a place to do business.**”*



Leonardo McClarty, CCE

President and CEO

Howard County Chamber of Commerce

The Maryland Public Policy Institute

One Research Court | Suite 450 | Rockville, MD 20850 | P 240.686.3510 | F 240.686.3511

mdbusinessclimate.org